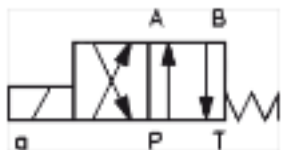


A worker in a black uniform is working on a hydraulic component in a factory. The scene is filled with rows of similar components on a production line. The entire image has a red color overlay.

# COMPONENTES HIDRÁULICOS

VÁLVULAS DIRECIONAIS  
CETOP 3 TN6

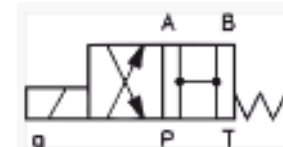
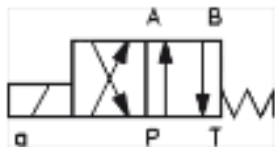
**VÁLVULAS DIRECIONAIS CETOP 3 TN6**



MODELO	ESTOQUE	VALOR
HK DG4V-3-2A-VM-U-12VDC	4	R\$ 475,00
HK DG4V-3-2A-VM-U-24VDC	4	R\$ 475,00
HK DG4V-3-2A-VM-U-110VAC	2	R\$ 485,00
HK DG4V-3-2A-VM-U-230VAC	2	R\$ 485,00

MODELO	ESTOQUE	VALOR
HK DG4V-3-2AL-VM-U-24VDC	2	R\$ 520,00

VÁLVULAS DIRECIONAIS CETOP 3 TN6

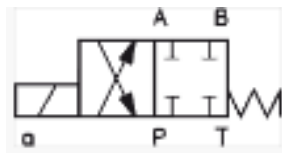


MODELO	ESTOQUE	VALOR
HK DG4V-3-0A-VM-U-24VDC	2	R\$ 530,00

MODELO	ESTOQUE	VALOR
HK DG4V-3-0B-VM-U-24VDC	4	R\$ 530,00
HK DG4V-3-0B-VM-U-230VAC	2	R\$ 530,00



**VÁLVULAS DIRECIONAIS CETOP 3 TN6**



MODELO	ESTOQUE	VALOR
HK DG4V-3-2B-VM-U-24VDC	2	R\$ 520,00
HK DG4V-3-2B-VM-U-110VAC	2	R\$ 520,00

MODELO	ESTOQUE	VALOR
HK DG4V-3-0C-VM-U-24VDC	2	R\$ 680,00
HK DG4V-3-0C-VM-U-110VAC	2	R\$ 695,00
HK DG4V-3-0C-VM-U-230VAC	2	R\$ 695,00



**VÁLVULAS DIRECIONAIS CETOP 3 TN6**

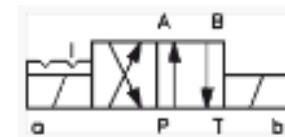
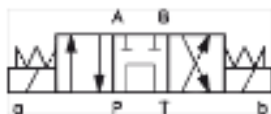


MODELO	ESTOQUE	VALOR
HK DG4V-3-2C-VM-U-24VDC	4	R\$ 620,00
HK DG4V-3-2C-VM-U-110VAC	2	R\$ 650,00
HK DG4V-3-2C-VM-U-230VAC	2	R\$ 650,00

MODELO	ESTOQUE	VALOR
HK DG4V-3-6C-VM-U-12VDC	2	R\$ 620,00
HK DG4V-3-6C-VM-U-24VDC	4	R\$ 620,00
HK DG4V-3-6C-VM-U-230VAC	2	R\$ 650,00



**VÁLVULAS DIRECIONAIS CETOP 3 TN6**



MODELO	ESTOQUE	VALOR
HK DG4V-3-8C-VM-U-12VDC	1	R\$ 685,00
HK DG4V-3-8C-VM-U-24VDC	4	R\$ 685,00
HK DG4V-3-8C-VM-U-110VAC	2	R\$ 715,00
HK DG4V-3-8C-VM-U-230VAC	2	R\$ 715,00

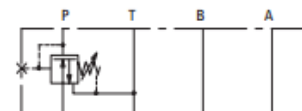
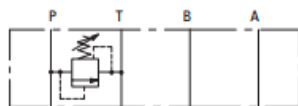
MODELO	ESTOQUE	VALOR
HK DG4V3-2N-VM-U-12DC	1	R\$ 685,00
HK DG4V3-2N-VM-U-24DC	2	R\$ 685,00



**COMPONENTES HIDRÁULICOS**  
VÁLVULAS MODULARES (SANDWICH)  
CETOP 3 TN6



**VÁLVULAS MODULARES (SANDWICH) CETOP 3 TN6**

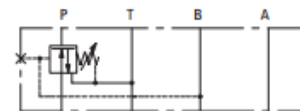
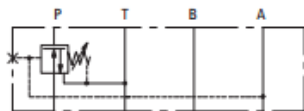


MODELO	ESTOQUE	VALOR
HK HMP 011 100 (ajuste 3-100 bar)	2	R\$ 750,00
HK HMP 011 210 (ajuste 10-210 bar)	2	R\$ 750,00
HK HMP 011 350 (ajuste 3-350 bar)	4	R\$ 750,00

MODELO	ESTOQUE	VALOR
HK HG 031 032 (redução em P) ajuste 3-32 bar	2	R\$ 920,00
HK HG 031 100 (redução em P) ajuste 20-100 bar	2	R\$ 920,00
HK HG 031 210 (redução em P) ajuste 50-210 bar	3	R\$ 920,00



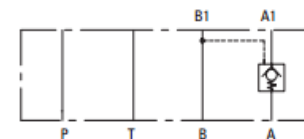
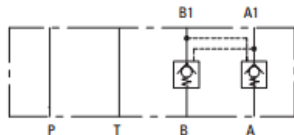
VÁLVULAS MODULARES (SANDWICH) CETOP 3 TN6



MODELO	ESTOQUE	VALOR
HK HG 033 100 (redução em A) ajuste 20-100 bar	1	R\$ 935,00

MODELO	ESTOQUE	VALOR
HK HG 034 100 (redução em B) ajuste 20-100 bar	1	R\$ 935,00

VÁLVULAS MODULARES (SANDWICH) CETOP 3 TN6

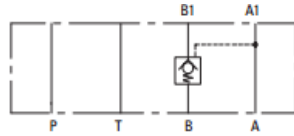


MODELO	ESTOQUE	VALOR
HK HR 012 (retenção dupla pilotada em A e B)	4	R\$ 615,00

MODELO	ESTOQUE	VALOR
HK HR 013 (retenção em A pilotada em B)	2	R\$ 580,00



## VÁLVULAS MODULARES (SANDWICH) CETOP 3 TN6



MODELO	ESTOQUE	VALOR
HK HR 014 (retenção em B pilotada em A)	2	R\$ 580,00

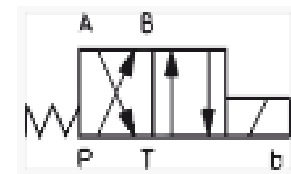
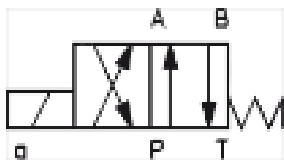
A worker in a black uniform is working on a hydraulic component in a factory. The scene is filled with rows of similar components on a production line. The entire image has a red color overlay.

# COMPONENTES HIDRÁULICOS

VÁLVULAS DIRECIONAIS  
CETOP 5 TN10



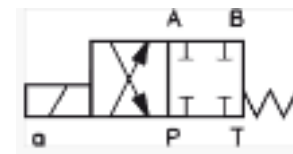
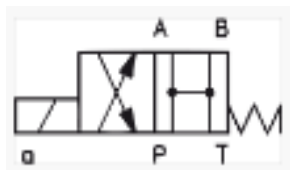
**VÁLVULAS DIRECIONAIS CETOP 5 TN10**



MODELO	ESTOQUE	VALOR
HK DG4V5 2AJ VM U 12DC	2	R\$ 1.070,00
HK DG4V5 2AJ VM U 24DC	2	R\$ 1.070,00
HK DG4V5 2A VM U 110AC	2	R\$ 1.070,00
HK DG4V5 2A VM U 230AC	2	R\$ 1.070,00

MODELO	ESTOQUE	VALOR
HK DG4V5 2ALJ VM U 24VDC	2	R\$ 1.090,00

VÁLVULAS DIRECIONAIS CETOP 5 TN10

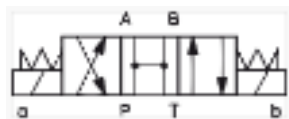


MODELO	ESTOQUE	VALOR
HK DG4V5 0BJ VM U 24DC	2	R\$ 1.125,00
HK DG4V5 0B VM U 110AC	1	R\$ 1.125,00
HK DG4V5 0B VM U 230AC	1	R\$ 1.125,00

MODELO	ESTOQUE	VALOR
HK DG4V5 2BJ VM U 24VDC	1	R\$ 1.125,00



**VÁLVULAS DIRECIONAIS CETOP 5 TN10**

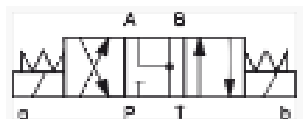


MODELO	ESTOQUE	VALOR
HK DG4V5 0CJ VM U 24VDC	3	R\$ 1.350,00
HK DG4V5 0C VM U 110AC	2	R\$ 1.350,00
HK DG4V5 0C VM U 230AC	2	R\$ 1.350,00

MODELO	ESTOQUE	VALOR
HK DG4V5 2CJ VM U 24VDC	2	R\$ 1.350,00



## VÁLVULAS DIRECIONAIS CETOP 5 TN10



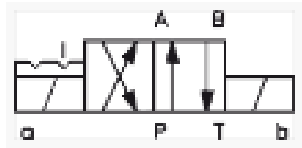
MODELO	ESTOQUE	VALOR
HK DG4V5 6CJ VM U 12VDC	2	R\$ 1.350,00
HK DG4V5 6CJ VM U 24VDC	4	R\$ 1.350,00

MODELO	ESTOQUE	VALOR
HK DG4V5 8CJ VM U 24VDC	4	R\$ 1.475,00





## VÁLVULAS DIRECIONAIS CETOP 5 TN10



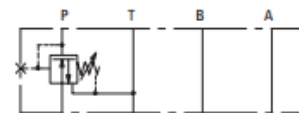
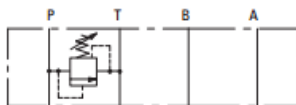
MODELO	ESTOQUE	VALOR
HK DG4V5 2NJ VM U 24DC	1	R\$ 1.475,00

A worker in a dark uniform is working on a hydraulic component in a factory setting. The scene is filled with rows of similar components on a production line. The entire image has a red color overlay.

# COMPONENTES HIDRÁULICOS

VÁLVULAS MODULARES  
CETOP 5 TN10

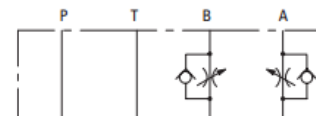
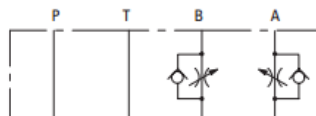
VÁLVULAS MODULARES CETOP 5 TN10



MODELO	ESTOQUE	VALOR
HK KM 011 100 (ajuste 5-100 bar)	2	R\$ 1.300,00
HK KM 011 210 (ajuste 5-210 bar)	2	R\$ 1.300,00

MODELO	ESTOQUE	VALOR
HK KG 031 100 (redução em P) ajuste 7-100 bar	2	R\$ 1.750,00

VÁLVULAS MODULARES CETOP 5 TN10

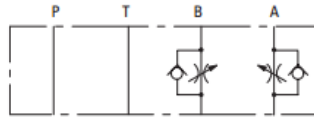


MODELO	ESTOQUE	VALOR
HK KQ 012 (regulagem de fluxo na saída em A e B)	3	R\$ 1.245,00

MODELO	ESTOQUE	VALOR
HK KQ 013 (regulagem de fluxo na saída em A)	1	R\$ 1.090,00



## VÁLVULAS MODULARES CETOP 5 TN10



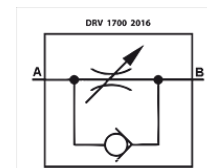
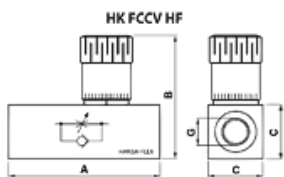
MODELO	ESTOQUE	VALOR
HK KQ 014 (regulagem de fluxo na saída em B)	1	R\$ 1.090,00

A worker in a black uniform is working on a large hydraulic component in a factory. The scene is filled with rows of similar components on a production line. The entire image has a red color overlay.

# COMPONENTES HIDRÁULICOS

## VÁLVULAS REGULADORAS

### VÁLVULA REGULADORA DE FLUXO EM LINHA



MODELO	ESTOQUE	VALOR
HK FCCV HF 400S 14 (19 LPM - 1/4"BSP)	4	R\$ 150,00
HK FCCV HF 600S 38 (30 LPM - 3/8"BSP)	4	R\$ 165,00
HK FCCV HF 800S 12 (57 LPM - 1/2"BSP)	4	R\$ 220,00
HK FCCV HF 1200S 34 (95 LPM - 3/4"BSP)	2	R\$ 465,00
HK FCCV HF 1600S 1 (150 LPM - 1"BSP)	2	R\$ 845,00

MODELO	ESTOQUE	VALOR
DRV 1700-1/4 (15 LPM - 1/4"BSP)	53	R\$ 175,00
DRV 1700-3/8 (30 LPM - 3/8"BSP)	93	R\$ 175,00
DRV 1700-1/2 (50 LPM - 1/2"BSP)	27	R\$ 230,00

A worker in a black uniform is working on a large hydraulic component in a factory. The scene is filled with rows of similar components on a production line. The entire image has a red color cast.

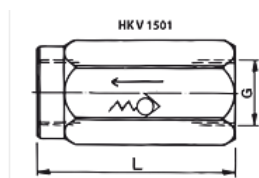
# COMPONENTES HIDRÁULICOS

## VÁLVULAS DE RETENÇÃO



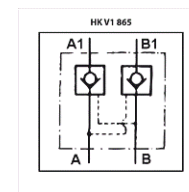


**VÁLVULAS DE RETENÇÃO EM LINHA**



MODELO	ESTOQUE	VALOR
HK V1 501 0006	106	R\$ 40,00
HK V1 501 0008	51	R\$ 55,00
HK V1 501 0012	33	R\$ 75,00
HK V1 501 0016	41	R\$ 90,00

**VÁLVULAS DE RETENÇÃO PILOTADA EM LINHA**



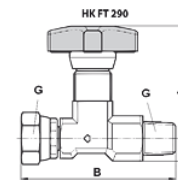
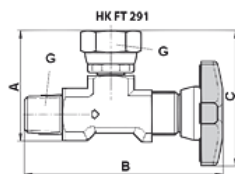
MODELO	ESTOQUE	VALOR
HK V1 865 06NT (30 LPM - 3/8" BSP)	2	R\$ 125,00
HK V1 865 0800 (1/2" BSP - 1/2" BSP)	2	R\$ 220,00

A worker in a black uniform is working on a large hydraulic component in a factory. The scene is filled with rows of similar components on a production line. The entire image has a red color overlay.

# COMPONENTES HIDRÁULICOS

## VÁLVULAS DE FECHAMENTO

VÁLVULAS DE FECHAMENTO PARA MANÔMETRO



MODELO	ESTOQUE	VALOR
HK FT 291-14 (1/4" BSP interno e externo)	77	R\$ 60,00

MODELO	ESTOQUE	VALOR
HK FT 291-14 (1/4" BSP interno e externo)	77	R\$ 60,00



**HANSA FLEX**

Hidráulica é sinônimo de Hansa-Flex